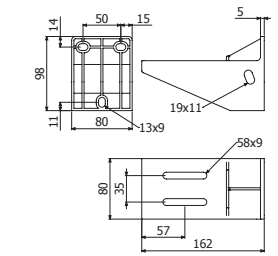




**SHG**

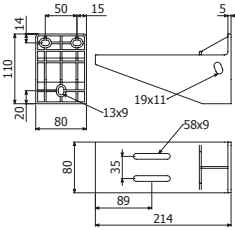


	B		40°		60°		PVC M1 UV	
	mm	inch	CTA (kg)	CTA (kg)	REF.	kg/ud		
SHG 100	100	4"	90	45	2/10011	0,19		
SHG 150	150	6"	105	52,5	2/10012	0,27		
SHG 200	200	8"	120	60	2/10013	0,34		
SHG 300	300	12"	130	65	2/10014	0,54		
SHG 400	400	16"	220	110	2/10015	0,95		
SHG 600	600	24"	180	90	2/10016	1,10		

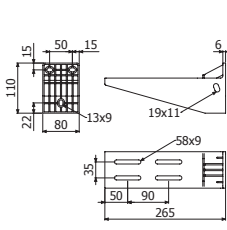


SHG100

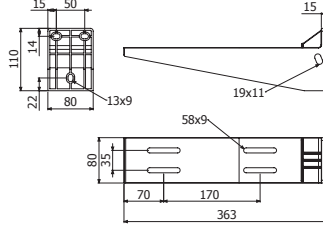
🔧 2/100 x CTBP (2/10017)



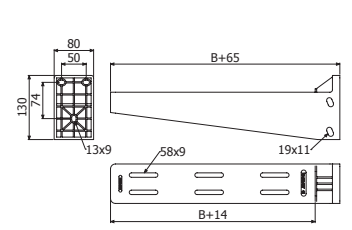
SHG150



SHG200

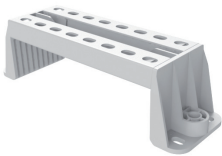


SHG300

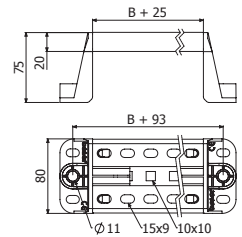


SHG 400/600

**SVG**



	B		CTA		PVC M1 UV	
	mm	inch	kg	lb	REF.	kg/ud
SVG 100	100	4"	384	846	2/10050	0,23
SVG 150	150	6"	384	846	2/10051	0,26
SVG 200	200	8"	384	846	2/10052	0,28
SVG 300	300	12"	204	450	2/10053	0,33
SVG 400	400	16"	120	263	2/10054	0,38
SVG 600	600	24"	60	132	2/10055	0,48



🔧 BPE ---> SVG: 2/100 x CTBP (2/10017)



**KSHGR**

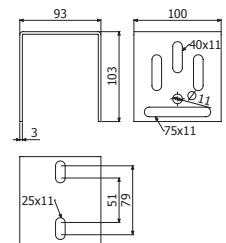


KSHGR	GSP 7035	
	REF.	kg/ud
	2/17282	0,61

PSHGR ---> KSHGR 🔧 4 x B2 i304

SHG 100-300 ---> KSHGR 🔧 1 x CT2 M10X100

SHG 400-600 ---> KSHGR 🔧 2 x CT2 M10X100



**CT2**



CT2 M10X100	i304	
	REF.	kg/ud
	2/7228	0,11

